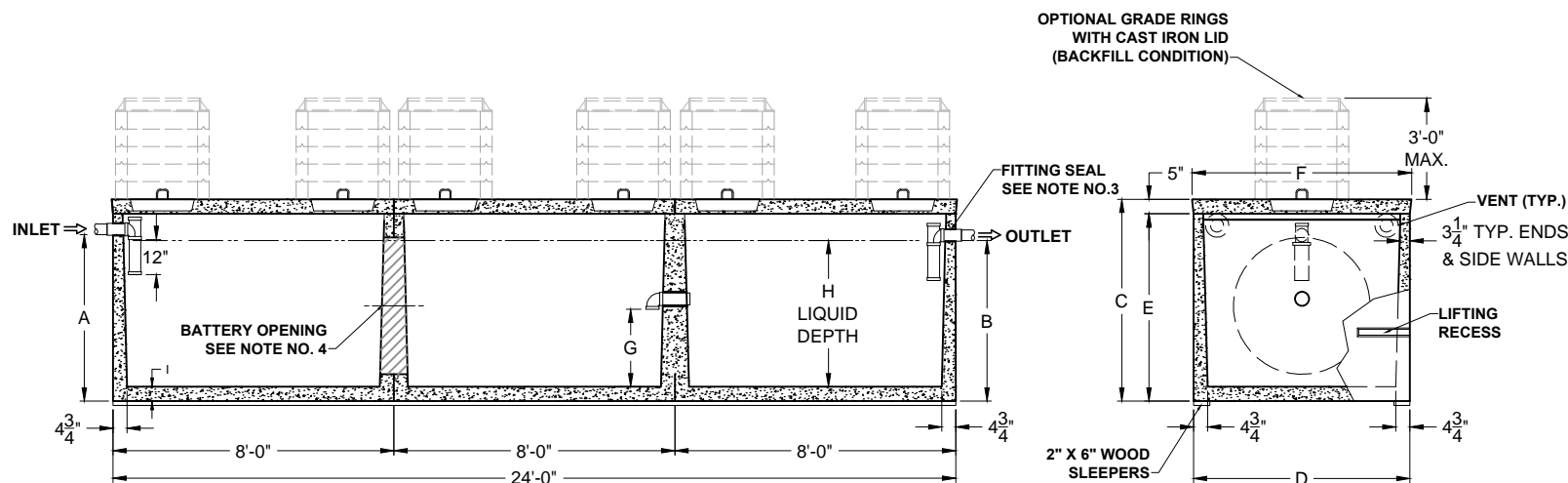


PLAN VIEW



SECTION THRU "A-A"

SECTION THRU "B-B"

PRODUCT NAME:
SEPTIC TANK

DESCRIPTION:
WITH SIX MANHOLES
3750 THRU 4500 GALLONS

DESIGN SPECIFICATIONS

DESIGN LOAD: PEDESTRIAN
(300 PSF)

WITH DRY SOIL CONDITIONS (WATER LEVEL BELOW TANK). SUITABLE SUB-BASE BEDDED WITH GRANULAR MATERIAL SHALL BE PREPARED TO HANDLE ANTICIPATED LOADS. FOR COMPLETE DESIGN AND PRODUCT INFORMATION, PLEASE CONTACT PRO-CAST PRODUCTS.

PRO-CAST PRODUCTS RESERVES THE RIGHT TO MAKE CHANGES TO PRODUCT DESIGN AND/OR DIMENSIONS WITHOUT NOTICE. PLEASE CONTACT PRO-CAST PRODUCTS WHENEVER NECESSARY FOR CONFIRMATION OR ADVICE ON PRODUCT DESIGN.

- NOTES:
1. REFER TO SPECIFICATION SHEET NO. S-201
 2. REFER TO SPECIFICATION SHEET NOS. S-251 & S-252
 3. REFER TO SPECIFICATION SHEET NO. S-249
 4. REFER TO SPECIFICATION SHEET NO. S-101

ALL DIMENSIONS ARE IN INCHES & WEIGHTS IN LBS - (RISER WT. NOT INCLUDED)

| MODEL | A | B | C | D | E | F | G | H | I | WEIGHT |
|-------------|--------|--------|--------|----|--------|----|--------|--------|-------|--------|
| S-LD-3-3750 | 57 | 54 | 69 | 74 | 64 | 75 | 25 1/4 | 50 1/2 | 4 1/2 | 41,625 |
| S-LD-3-4500 | 60 1/2 | 57 1/2 | 72 1/2 | 85 | 67 1/2 | 86 | 26 3/4 | 53 1/2 | 5 | 48,660 |

EXCAVATION SPECIFICATIONS

| MODEL | S-3750 | S-4500 |
|-------------|--------|-----------|
| LENGTH | 27'-0" | 27'-0" |
| WIDTH | 9'-2" | 10'-1" |
| BELOW INLET | 4'-9" | 5'-0 1/2" |
| TANK HEIGHT | 5'-9" | 6'-01/2" |

SCALE: 3/16" = 1'-0"

DRAWN BY: TPC 9/14/2017

REVISED BY:

CHECKED BY:

DRAWING NO.
S-004